



# FastBEAM™ Editor

## Structural Part Creator

CREATE OR EDIT NC1 FILES (DSTV)



### HIGHLIGHTS:

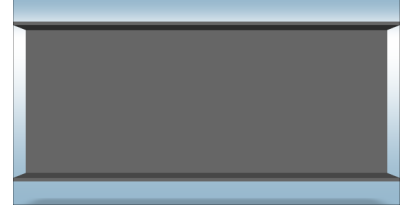
- CREATE DSTV (NC1)
- READ, VERIFY AND EDIT NC1
- COVERS CUTTING, MITERING, DRILLING, COPING, PENETRATIONS, MARKING
- 3D VISUAL VERIFICATION
- INCLUDES COMPREHENSIVE SECTION CATALOG

The FastBEAM™ Editor creates structural NC1 (DSTV) files readable by many Beam lines, Angle-lines, and Flat Bar Processors. Cut, Drill, Cope and Mitre structural shapes including Beams, Channels, Angles, Tee's, RHS/SHS and Flat Bar.

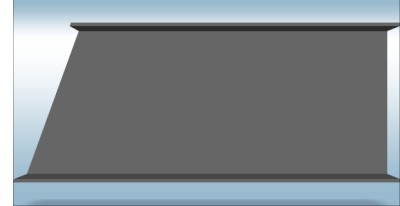
FastBEAM™ is a low cost fast and simple way to create structural files for both estimating and production.

FastBEAM includes a comprehensive section catalog (Inch or Metric) The catalog is fully editable and supports aliasing to align non-standard section names with catalogue items. FastBEAM can also read, verify & modify existing NC1 files from a variety of Structural Design systems.

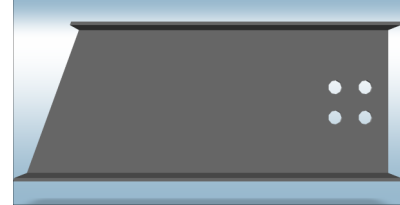
Cut to length



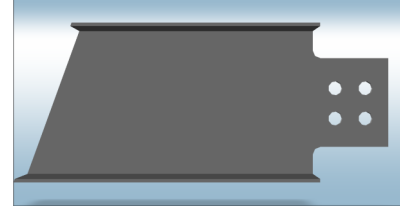
Mitering



Drilling



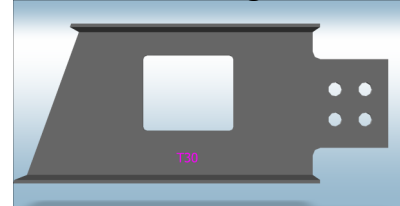
Coping



Penetrations



Marking



###	Element	Operation	X Position	Y Position	Number					
1	W	15/16	20-1/2	4	2	2	2			
2	W	P	8	2	Radius =	.25	6	5		
3	W	H	C10-45/64	C8-1/2	Text =	T30				
4										
5										
6										
7										
8										
9										
10										

Details Warnings Nest Details

Section=W10X12 Mat=A36 Length=24 WebFarSideOnly=OFF HoleProx=OFF Machine=DSTV Output Gx=25/32 Gy=2-37/64

www.fastcam.com

FastCAM, FastPLOT, FastPATH, FastNEST, FastSHAPES, FastTRACK, FastCAM QE, FastCAM MTO, FastFRAME, FastBEAM, FastCOPY, FastCUT, FastPIPE Tradesman In a Box & FastLINK are trademarks or registered trademarks of Fagan Microprocessor Systems Pty. Ltd.

Other trademarks belong to their respective companies. © 2019. All rights reserved worldwide.



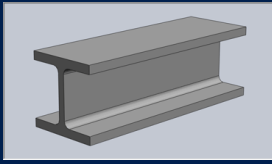
# FastBEAM™ Editor

## Structural Part Creator

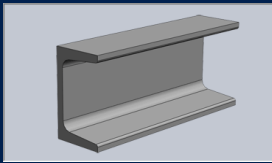
CREATE OR EDIT NC1 FILES (DSTV)



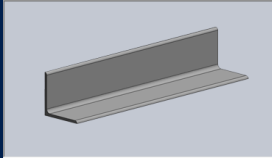
### Beams



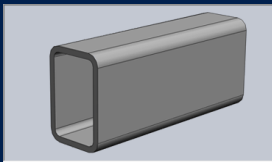
### Channels



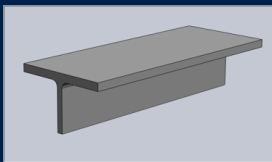
### Angles



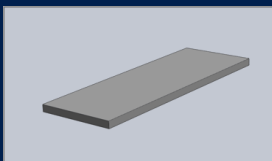
### RHS



### Tee's



### Flats



### PRINT DETAILED PART INFORMATION COMPLETE WITH FULL GRAPHICS

FastBEAM v5.2.7

Customer ID :  
 Drawing No. :  
 Item No. : T30  
 Mark :

Qty : 1  
 Section : W10X12  
 Length : 24  
 Material : A36

#### Copes ...

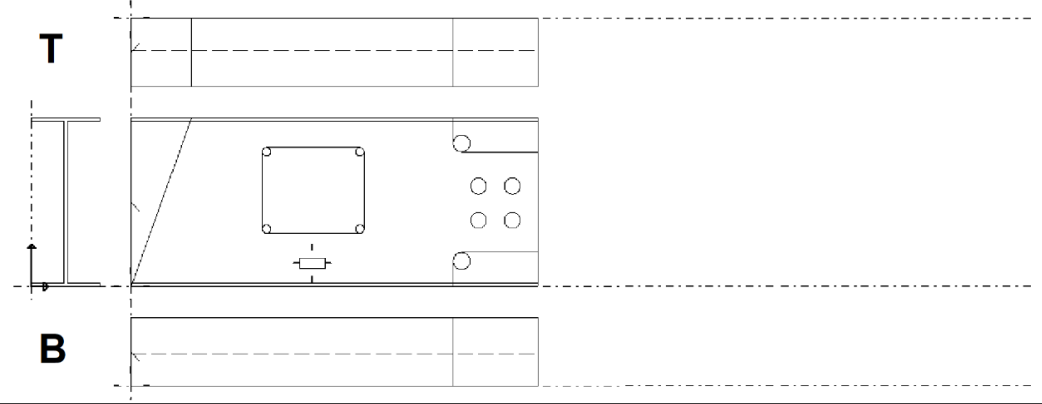
Length	Depth	Radius	Type	FTLF	FTRF	Length	Depth	Radius	Type
				FTLN	FTRN				
				WTL	WTR	5	2	0.5	A
				WBL	WBR	5	2	0.5	A
				FBLN	FBRN				
				FBLF	FBRF				

#### WEB Mitres ... ( Critical Length ... N/A )

LH end as detailed			RH end as detailed		
Angle (deg)	Cut Dim.	Dir.	Angle (deg)	Cut Dim.	Dir.
20.007	3-19/32	CW	0	0	

#### Details ...

###	Element	Operatio n	X Position	Y Position	Number in X	Number in Y	Distance in X	Distance in Y	Aux.	ERROR
1	N	0.937	20-1/2	3-7/8	2	2	2	2	T	
2	N	P	8	3-3/8	Radius =	0.25	6	5	T	
3	N	H	10- 45/64C	1-3/8C	Text =	T30				



### FASTCAM® WORLDWIDE OFFICES

#### USA / World

Cumberland Metro Office Park  
 5519 N. Cumberland Ave. Suite 1008  
 Chicago, IL, 60656, USA  
 fastcam@fastcam.com  
 Phone: 312 715 1535  
 Fax: 312 715 1536

#### Asia Pacific

96 Canterbury Road,  
 Melbourne, VIC, 3206, Australia  
 fastcam@fastcam.com.au  
 Phone: 61 3 9699 9899  
 Fax: 61 3 9699 7501

#### China

No.5, Building 19/498 Guoshoujing Rd  
 Pudong Software Park,  
 Shanghai 201203, China  
 fastcam@fastcam.cn  
 Phone: 8621 5080 3069  
 Fax: 8621 5080 3071

www.fastcam.com